

N.E. 1/4 OF SECTION 5, T.6N., R.1W., S.L.B. & M.

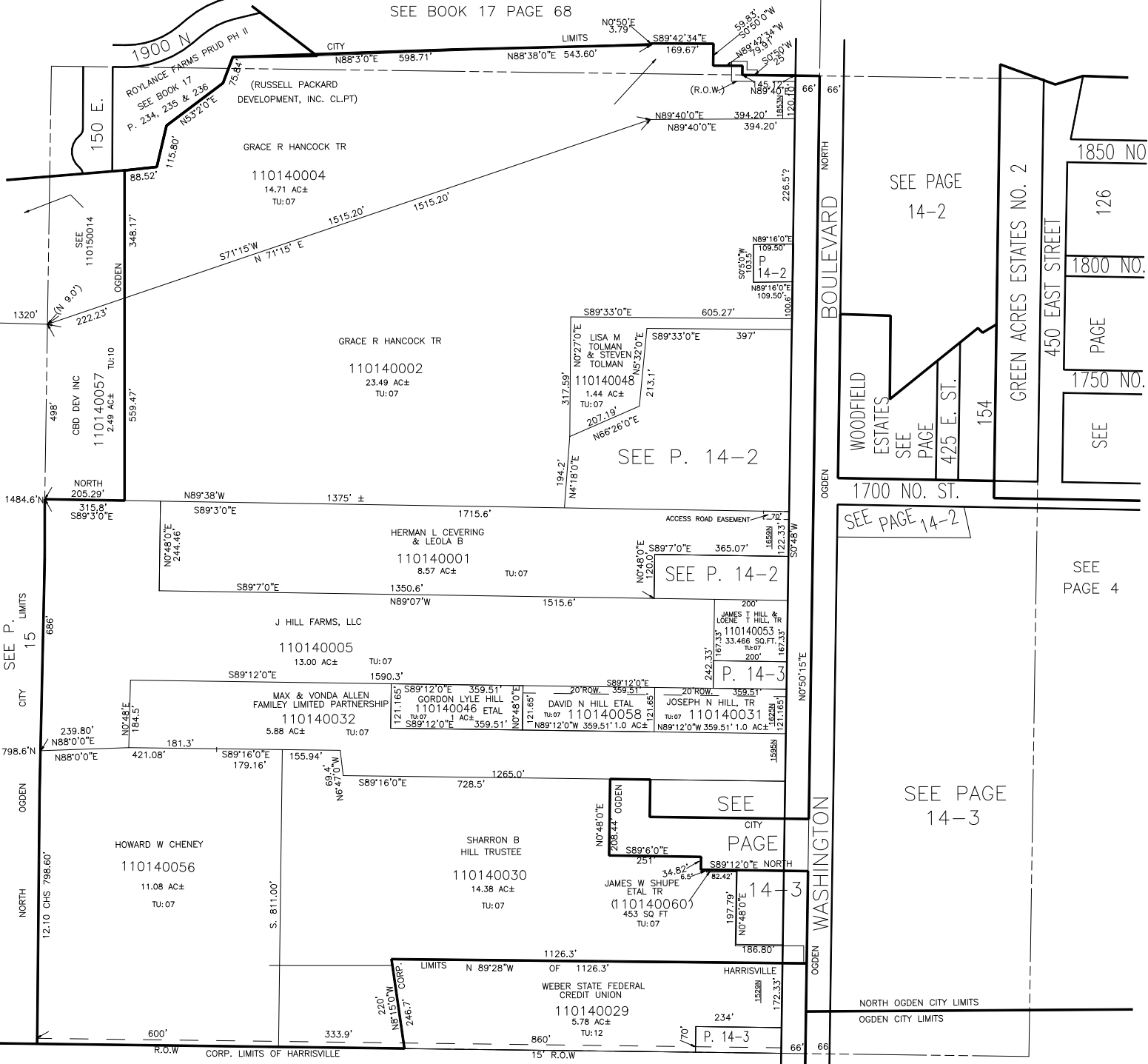
IN NORTH OGDEN CITY, HARRISVILLE CITY, NORTH OGDEN DISTRICT

TAXING UNIT: 7, 10, 12, 332

SCALE 1" = 200'

ALSO SEE PAGES 14-2 ,14-3

SEE BOOK 17 PAGE 68



SEE P. 15 LIMITS CITY NORTH OGDEN

BOULEVARD NORTH OGDEN WASHINGTON OGDEN

SEE PAGE 14-2

WOODFIELD ESTATES SEE PAGE 14-2

SEE PAGE 14-2

SEE PAGE 14-3

SEE PAGE 14-3

SEE PAGE 4

SEE PAGE 16